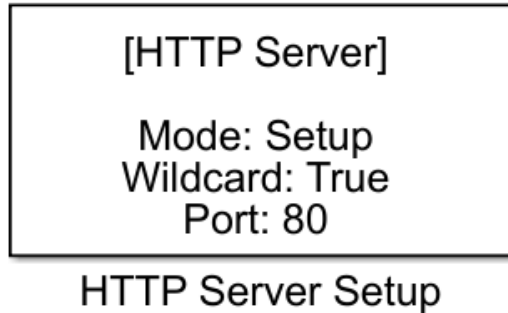


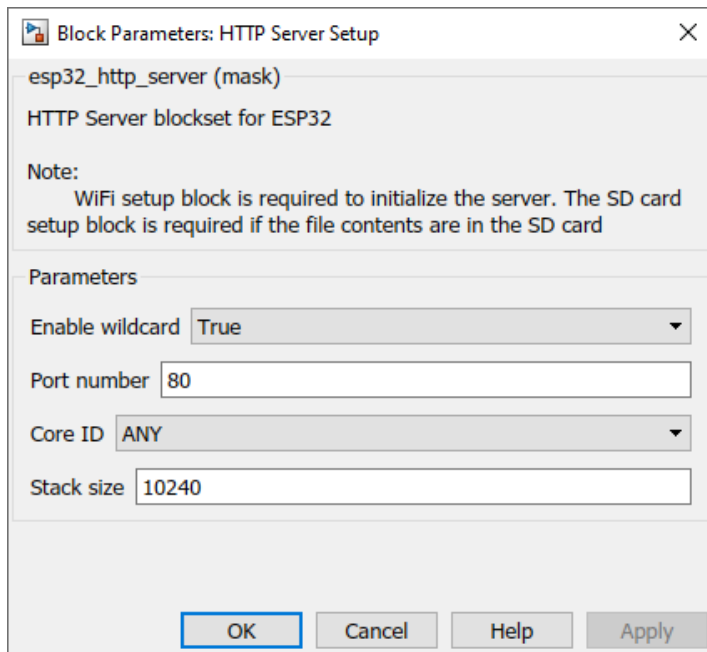
HTTP Server Setup Block

[View table of content.](#)[View table of content.](#)

How this block appears in a Simulink model?



What can be configured?



Configuration Parameter	Selectable Option/Value	Description
Enable wildcard	True--False	Enable or disable wildcard. By enabling this, server accepts multiple <i>uri</i> s in a single handler
Port number		Specify the port number which the server operates
Core ID	0--1--ANY	Select which core the server should operate
Stack size		Specify the stack size for the server task

When to use this block?

Use this block for the application which need to implement a custom http server using ESP32.

How does this block work?

This block will initialize the http server with the given configuration.

Demo

[HTTP Server demo](#)

Previous : [NTP Block](#)

Next : [HTTP GET Handler Block](#)

Files

httpserver2.png	25.3 KB	05 Nov 2020	Chandima Jayaneththi (จันทิมา)
httpserver.png	11.8 KB	05 Nov 2020	Chandima Jayaneththi (จันทิมา)