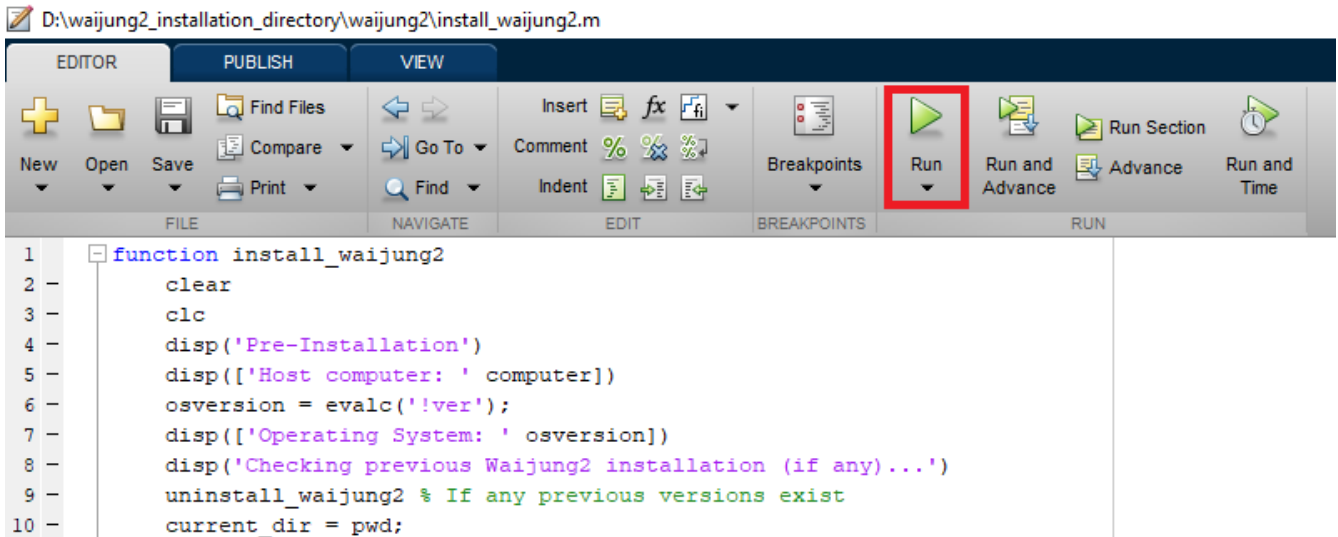
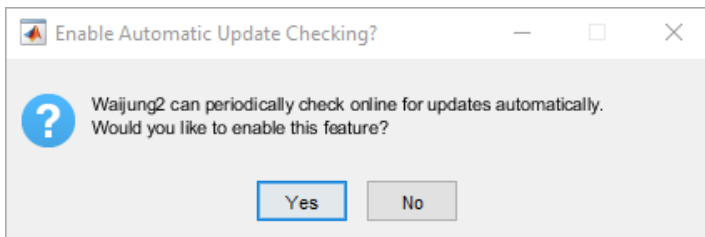


Waijung 2 installation

1. Move the downloaded file to the installation directory and extract the content. Make sure the installation directory path does not have any spaces.
2. Open Matlab and change the current directory to the extracted folder. Open install_waijung2.m script.
3. Click Run to execute the script

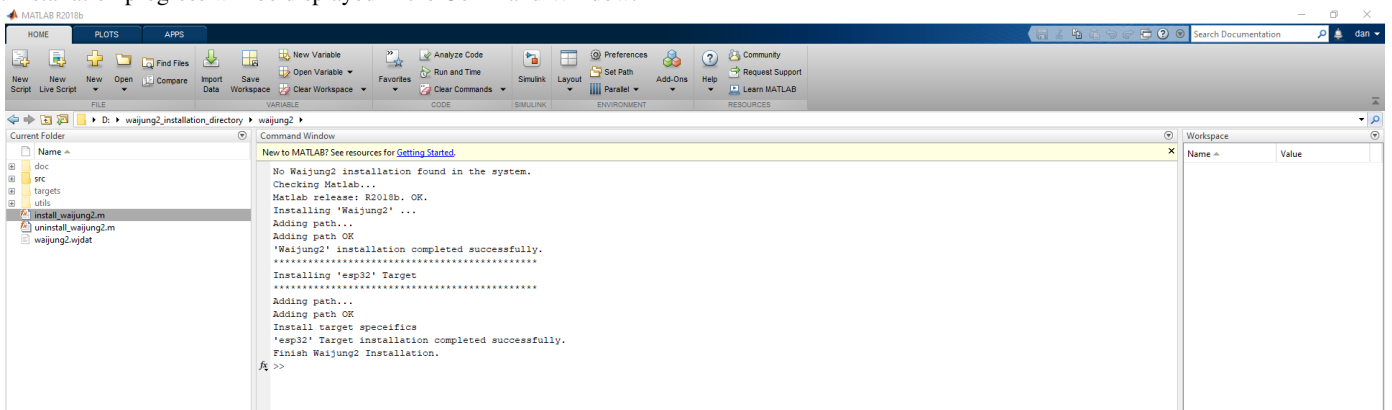


4. The script will automatically check dependencies and install Waijung2 Block-set to Matlab. Please note that any previous Waijung2 installations will be removed automatically before installing the new block-set. However the older Waijung2 folder or the files created will not be deleted.



At the end of the installation a pop-up window will ask to enable automatic updates. Click Yes .

5. Installation progress will be displayed in the Command Window.



6. Similarly uninstall_waijung2.m can be used to successfully uninstall the waijung2 block-set from MATLAB.

Previous: [How to get Waijung 2?](#)

Next: [Simulate LED toggle](#)

Files

File Name	Size	Date	Author
cap1.png	79.7 KB	16 Oct 2020	Vasitha Tilakumara (၇၁၅)
cap2.png	83.7 KB	16 Oct 2020	Vasitha Tilakumara (၇၁၅)

cap4.PNG	7.14 KB	16 Oct 2020	Vasitha Tilakumara (රාඪ)
cap3.png	39.4 KB	16 Oct 2020	Vasitha Tilakumara (රාඪ)
cap5.PNG	91.6 KB	16 Oct 2020	Vasitha Tilakumara (රාඪ)